

The Grove Edgware, HA8



- Refurbished Throughout
 - Potential To Extend
 - Large Garden
- Three Double Bedrooms
 - Double Reception Room
 - Off Street Parking

A beautifully presented three bedroom semi-detached family home located in the heart of Edgware. The property has been fully refurbished to a high standard, offering bright and modern living spaces throughout. This home also provides an excellent opportunity for further development, with substantial scope to extend to the side, rear, and into the loft (subject to planning permission).

The ground floor comprises a welcoming entrance hallway leading to a spacious and bright double reception room, ideal for family living and entertaining. The kitchen is finished to a high standard with high-quality finishes.

On the first floor, there are three generously sized double bedrooms and a modern family bathroom.

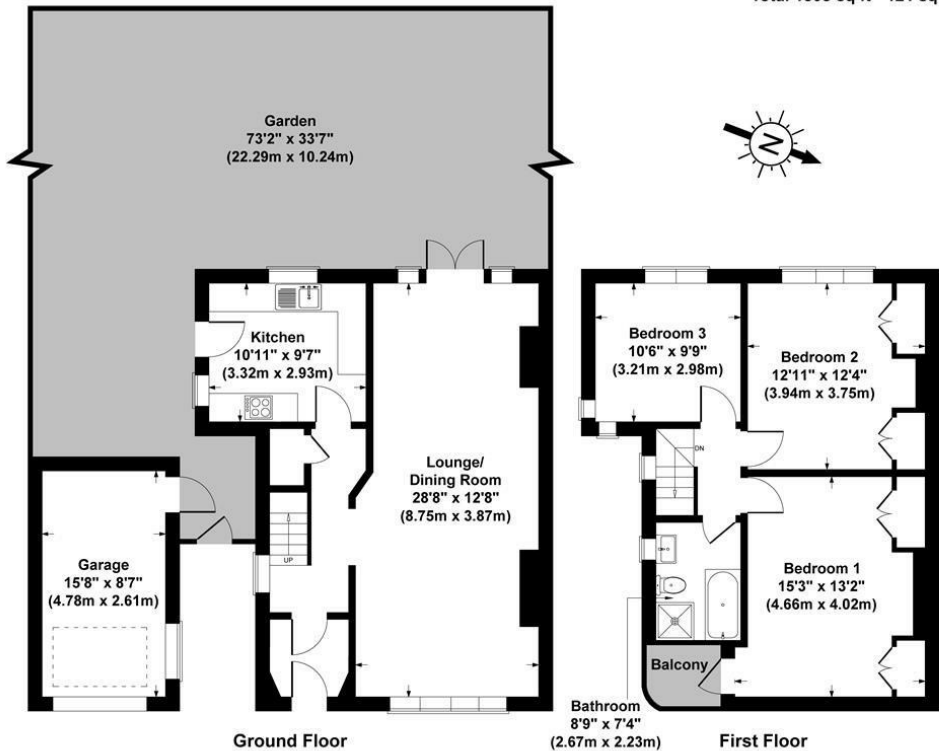
Externally, the property benefits from a large rear garden, a garage and off street parking.

Asking price £750,000



The Grove, Edgware HA8 9QA

Gross Internal Area
House - 1169sq ft / 108 sq metres
Garage - 134 sq ft / 12.4 sq metres
Total 1303 sq ft - 121 sq metres



All measurements of walls, doors, windows, fittings and appliances, including their size and location, are shown as standard sizes and therefore cannot be regarded as a representation by the seller.


DANI DENBY

